


 **Primary 6 Science (Prelim) - SCGS (Y0)** 

Add Questions

Assign

Settings

Review

 Duplicate Print Delete Assign Test**Test Introduction**[+ Add Introduction](#)**64 Questions** (68 Points)Question Bank: 12,655 Questions 

Test Questions

0 Test Assignments

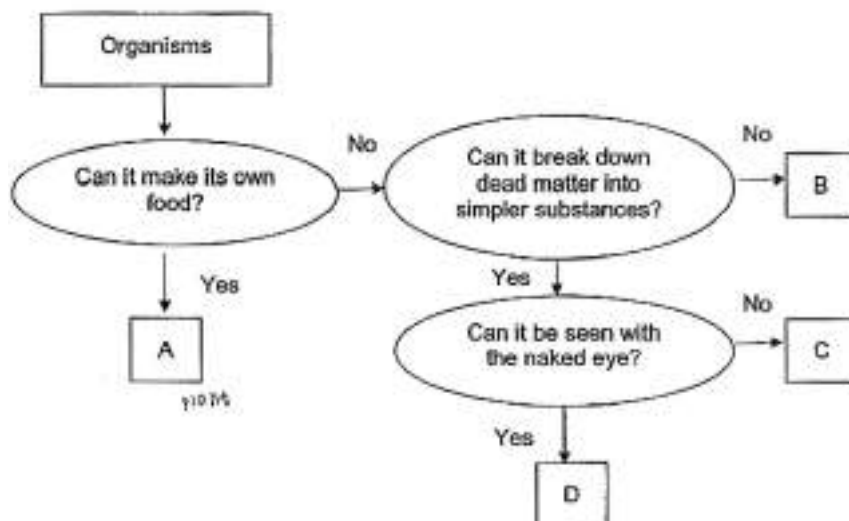
Question 1

Primary 6 Science » Primary 6 Science (Prelim)

2 pts

For each question, four options are given. One of them is the correct answer, make your choice.
(56 marks)

Observe the flow chart below.



Which of the organisms above is likely a mushroom?

- A. A only
- B. B only
- C. C only
- D. D only



Question Type: Multiple Choice
Randomize Answers: No
Date Added: Tue 5th Oct 2021
Last Modified: N/A
QID#: 29,229,356

[Answers](#) | [Edit](#) | [Duplicate](#) | [Used In](#) | [Reorder](#)

[Remove From Test](#)

Question 2

Primary 6 Science » Primary 6 Science (Prelim)

2 pts

Jasmine wants to find out the difference between birds and mammals.
Which one of the following questions should she ask?

- A. Does it fly?
- B. What does it eat?
- C. Does it live in water or on land?
- D. What is its outer body covering?

Question Type: Multiple Choice
Randomize Answers: No
Date Added: Tue 5th Oct 2021
Last Modified: N/A
QID#: 29,229,364

[Answers](#) | [Edit](#) | [Duplicate](#) | [Used In](#) | [Reorder](#)

[Remove From Test](#)

Question 3

Primary 6 Science » Primary 6 Science (Prelim)

2 pts

The table below shows the properties of Materials W, X, Y and Z.

Materials	Waterproof	Flexible	Strong	Transparent
W	✓		✓	✓
X		✓		✓
Y			✓	✓
Z	✓	✓	✓	

Which of the materials is most suitable for making the tent cover for camping as shown below?



- A. Material W
- B. Material X
- C. Material Y

✓ D. Material Z

Question Type: Multiple Choice
Randomize Answers: No
Date Added: Tue 5th Oct 2021
Last Modified: N/A
QID#: 29,229,392

[Answers](#) | [Edit](#) | [Duplicate](#) | [Used In](#) | [Reorder](#)

[Remove From Test](#)

Question 4

Primary 6 Science » Primary 6 Science (Prelim)

2 pts

The table below shows a classification of organisms.

Group 1	Group 2	Group 3
Shark	Mosquito	Seal
Guppy	Grasshopper	Polar bear
Goldfish	Butterfly	Penguin

The animals are grouped by their outer body covering. Which of the following is wrongly classified?

- A. Shark
- B. Guppy
- ✓ C. Penguin
- D. Grasshopper

Question Type: Multiple Choice
Randomize Answers: No
Date Added: Tue 5th Oct 2021
Last Modified: N/A
QID#: 29,229,397

[Answers](#) | [Edit](#) | [Duplicate](#) | [Used In](#) | [Reorder](#)

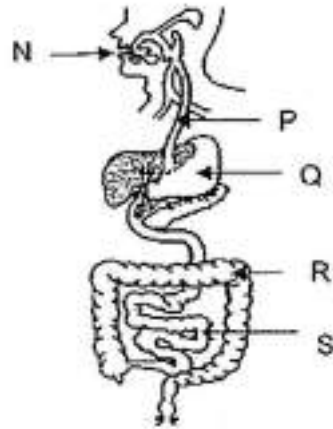
[Remove From Test](#)

Question 5

Primary 6 Science » Primary 6 Science (Prelim)

2 pts

The diagram below shows the human digestive system.



Which of the following is correct?

- A.

Contain digestive juices	Where excess water is absorbed from the undigested food
N and R	S
- B.

Contain digestive juices	Where excess water is absorbed from the undigested food
P and Q	R
- ✓ C.

Contain digestive juices	Where excess water is absorbed from the undigested food
N and S	R
- D.

Contain digestive juices	Where excess water is absorbed from the undigested food
Q and R	S

Question Type: Multiple Choice
Randomize Answers: No
Date Added: Tue 5th Oct 2021
Last Modified: N/A
QID#: 29,229,411

[Answers](#) | [Edit](#) | [Duplicate](#) | [Used In](#) | [Reorder](#)

[Remove From Test](#)

Question 6

Primary 6 Science » Primary 6 Science (Prelim)

2 pts

Sarah hid in a cupboard during the game of hide-and-seek with her friends.

Which of the following correctly shows the amount of gases in the cupboard after 10 minutes?

A.

Oxygen	Carbon dioxide	Water vapour
Increase	Decrease	Decrease

B.

Oxygen	Carbon dioxide	Water vapour
Increase	Decrease	Increase

C.

Oxygen	Carbon dioxide	Water vapour
Decrease	Increase	Decrease

✓ D.

Oxygen	Carbon dioxide	Water vapour
Decrease	Increase	Increase

Question Type: Multiple Choice
Randomize Answers: No
Date Added: Tue 5th Oct 2021
Last Modified: N/A
QID#: 29,229,433

[Answers](#) | [Edit](#) | [Duplicate](#) | [Used In](#) | [Reorder](#)

[Remove From Test](#)

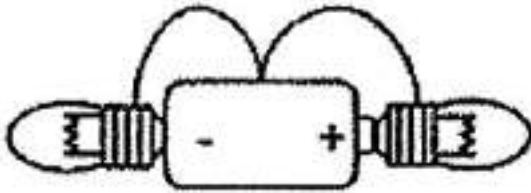
Question 7

Primary 6 Science » Primary 6 Science (Prelim)

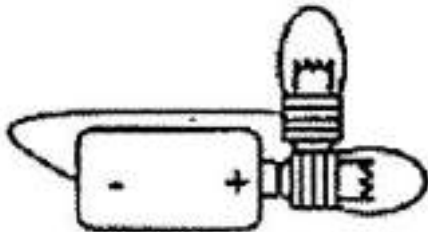
2 pts

Study the circuits below.
 Which of the following will have only one bulb lighted up?

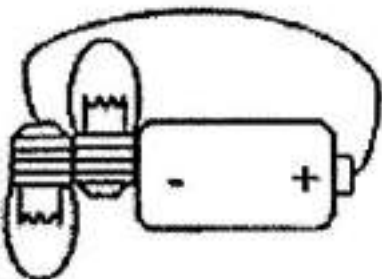
A.



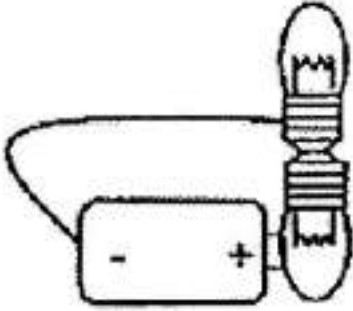
B.



✓ C.



D.



Question Type: Multiple Choice
Randomize Answers: No
Date Added: Tue 5th Oct 2021
Last Modified: N/A
QID#: 29,229,448

[Answers](#) | [Edit](#) | [Duplicate](#) | [Used In](#) | [Reorder](#)

[Remove From Test](#)

Question 8

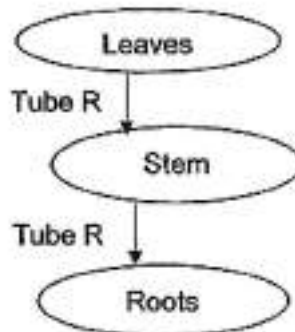
Primary 6 Science » Primary 6 Science (Prelim)

2 pts

The diagrams below show a human circulatory system and the plant transport system.



Human circulatory system



Plant transport system

Which of the following is/are transported in both the human circulatory system and in Tube R?

- A: Food
- B: Water
- C: Mineral salts

- ✓ A. A only
- B. A and C only
- C. B and C only
- D. All of the above

Question Type: Multiple Choice

Randomize Answers: No
 Date Added: Tue 5th Oct 2021
 Last Modified: N/A
 QID#: 29,229,454

[Answers](#) | [Edit](#) | [Duplicate](#) | [Used In](#) | [Reorder](#)

[Remove From Test](#)

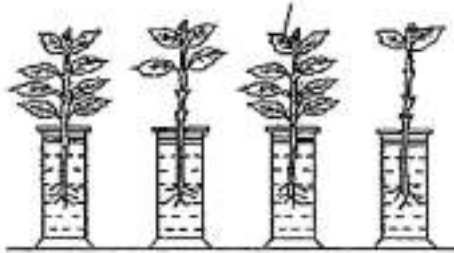
Question 9

Primary 6 Science » Primary 6 Science (Prelim)

2 pts

The diagram below shows 4 set-ups with similar plants used.

Leaves coated with oil



Set-up W Set-up X Set-up Y Set-up Z

Which of the following will have the least amount of water left after 3 days?

- ✓ A. Set-up W
- B. Set-up X
- C. Set-up Y
- D. Set-up Z

Question Type: Multiple Choice
 Randomize Answers: No
 Date Added: Tue 5th Oct 2021
 Last Modified: N/A
 QID#: 29,229,463

[Answers](#) | [Edit](#) | [Duplicate](#) | [Used In](#) | [Reorder](#)

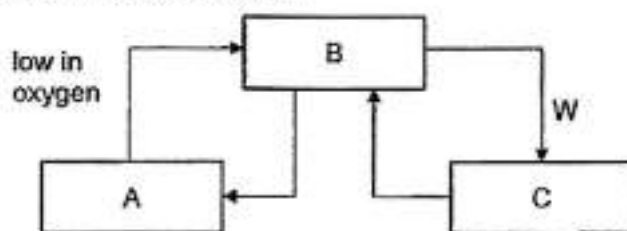
[Remove From Test](#)

Question 10

Primary 6 Science » Primary 6 Science (Prelim)

2 pts

The diagram below shows the human circulatory system. A, B and C are organs and W is a blood vessel.



Which of the following correctly identifies A, B, C and W?

- ✓ A.

A	B	C	W
Stomach	Heart	Lungs	Low in oxygen

B.

A	B	C	W
Lungs	Heat	Stomach	High in oxygen

C.

A	B	C	W
Heart	Lungs	Stomach	Low in oxygen

D.

A	B	C	W
Stomach	Lungs	Heart	High in oxygen

Question Type: Multiple Choice
Randomize Answers: No
Date Added: Tue 5th Oct 2021
Last Modified: N/A
QID#: 29,229,474

[Answers](#) | [Edit](#) | [Duplicate](#) | [Used In](#) | [Reorder](#)

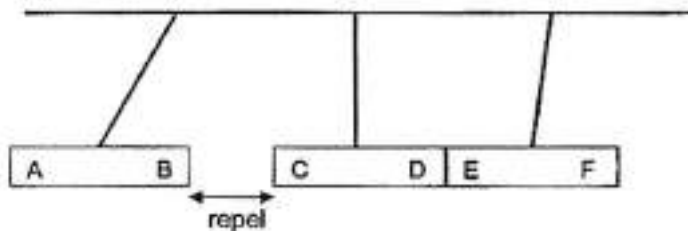
[Remove From Test](#)

Question 11

Primary 6 Science » Primary 6 Science (Prelim)

2 pts

Arvin set up the experiment below involving 3 magnets.



He then predicted some reactions between some of the poles of the 3 magnets if they were brought close together and presented his predictions in the table below.

	Poles of magnets	Reaction
V:	A and D	Attract
W:	A and E	Attract
S:	B and D	Repel
Y:	C and F	Attract

Which of Arvin's predictions is/are correct?

- A. X only
- B. V and X only
- ✓ C. W and Y only
- D. W, X and Y only

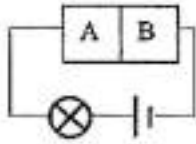
Question Type: Multiple Choice
Randomize Answers: No
Date Added: Tue 5th Oct 2021
Last Modified: N/A
QID#: 29,229,478

Question 12

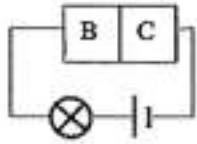
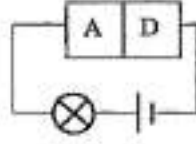
Primary 6 Science » Primary 6 Science (Prelim)

2 pts

Pamela set up the following circuits with 4 different materials, A, B, C and D and recorded her results below.

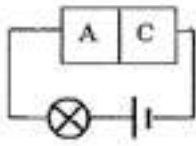


Bulb lights up

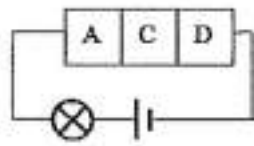
Bulb does not
light up

Bulb lights up

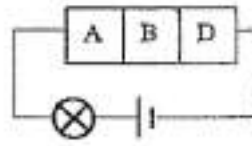
Which of the following arrangements will allow the bulb to light up?



Circuit X



Circuit Y



Circuit Z

- A. Circuit X only
- ✓ B. Circuit Z only
- C. Circuits X and Y only
- D. Circuits Y and Z only

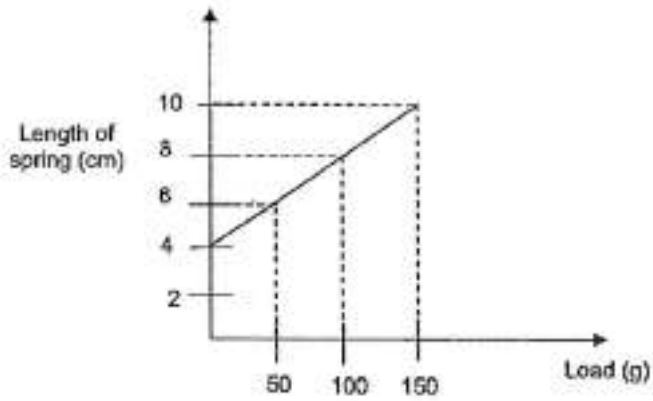
Question Type: Multiple Choice
Randomize Answers: No
Date Added: Tue 5th Oct 2021
Last Modified: N/A
QID#: 29,229,486

Question 13

Primary 6 Science » Primary 6 Science (Prelim)

2 pts

Balam hung different masses of weight onto a spring. He recorded the length of spring and plotted the graph below.



What is the extension of spring when 250g of weight is added to it?

- A. 8 cm
- ✓ B. 10 cm
- C. 12 cm
- D. 14 cm

Question Type: Multiple Choice
Randomize Answers: No
Date Added: Tue 5th Oct 2021
Last Modified: N/A
QID#: 29,229,491

[Answers](#) | [Edit](#) | [Duplicate](#) | [Used In](#) | [Reorder](#)

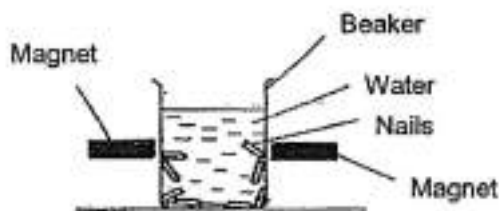
[Remove From Test](#)

Question 14

Primary 6 Science » Primary 6 Science (Prelim)

2 pts

An experiment is set up below and the magnets could only attract a few nails.



Based on the observations above, which of the following statements is/are likely to be correct?

- A: Some of the nails are not magnetic.
 - B: The magnets are repelling one another.
 - C: The magnets are attracting one another.
 - D: The magnets are not strong enough to attract all the nails.
- A. A and C only
 - ✓ B. A and D only
 - C. B and D only

D. A, B and D only

Question Type: Multiple Choice
Randomize Answers: No
Date Added: Tue 5th Oct 2021
Last Modified: N/A
QID#: 29,229,498

[Answers](#) | [Edit](#) | [Duplicate](#) | [Used In](#) | [Reorder](#)

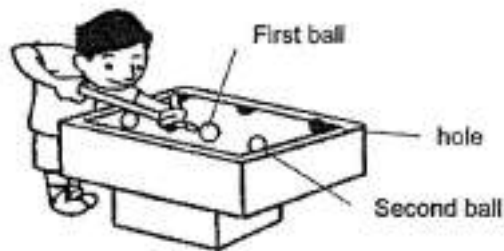
[Remove From Test](#)

Question 15

Primary 6 Science » Primary 6 Science (Prelim)

2 pts

Leonard played the game below where he has to use a stick to hit a ball which will hit another ball. He wins the game when the second ball drops into a hole.



Which of the following shows the effect of the force acting on the second ball?

- A. A force can change the shape of an object.
- B. A force can cause a moving object to stop moving.
- ✓ C. A force can cause an object to start moving.
- D. A force can change the direction of a moving object.

Question Type: Multiple Choice
Randomize Answers: No
Date Added: Tue 5th Oct 2021
Last Modified: N/A
QID#: 29,229,513

[Answers](#) | [Edit](#) | [Duplicate](#) | [Used In](#) | [Reorder](#)

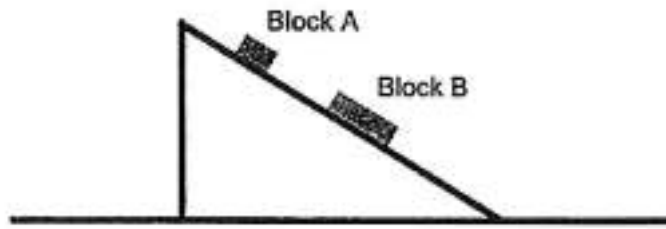
[Remove From Test](#)

Question 16

Primary 6 Science » Primary 6 Science (Prelim)

2 pts

Hannah placed 2 objects, A and B, at different positions on a slope. Object B is bigger and heavier than Object A. Both are stationary until Block A is moved nearer to Block B. When Object A is moved nearer to Block B, Block B moves downwards.



Hannah made the following statements:

- A: Magnetic force is acting on both Blocks A and B.
 B: Block A has greater gravitational force acting on it than Block B.
 C: There is no frictional force acting on the blocks when they are not moving.

Which of the following statements is/are correct?

- ✓ A. A only
 B. A and B only
 C. B and C only
 D. A, B and C

Question Type: Multiple Choice
 Randomize Answers: No
 Date Added: Tue 5th Oct 2021
 Last Modified: N/A
 QID#: 29,229,518

[Answers](#) | [Edit](#) | [Duplicate](#) | [Used In](#) | [Reorder](#)

[Remove From Test](#)

Question 17

Primary 6 Science » Primary 6 Science (Prelim)

2 pts

4 similar cups with an equal number of seeds were placed under 4 different conditions as shown below.

Cups	Light	Soil	Appearance of seeds	
			Root	Shoot
A	Absent	Wet	Yes	Yes
B	Absent	Dry	No	No
C	Present	Wet	Yes	Yes
D	Present	Dry	No	No

Based on the experiment above only, what can be concluded?

- A. Soil is needed for germination.
 ✓ B. Water is needed for germination.
 C. Light and water are needed for germination.
 D. Air, warmth and water are needed for germination.

Question Type: Multiple Choice
Randomize Answers: No
Date Added: Tue 5th Oct 2021
Last Modified: N/A
QID#: 29,229,525

[Answers](#) | [Edit](#) | [Duplicate](#) | [Used In](#) | [Reorder](#)

[Remove From Test](#)

Question 18

Primary 6 Science » Primary 6 Science (Prelim)

2 pts

Min wanted to find out if the number of petals of Flower X will affect the number of bees attracted to it. He set up the experiment as shown in the table below.

	A	B	C	D
Location	Garden	Open field	Open field	Open field
Number of petals on Flower X	8	8	5	2
Colour of petals	Red	Yellow	Red	Yellow

Which of the following pair of set-ups should he compare to meet the aim of his experiment?

- A. A and B
- B. A and D
- C. B and C
- ✓ D. B and D

Question Type: Multiple Choice
Randomize Answers: No
Date Added: Tue 5th Oct 2021
Last Modified: N/A
QID#: 29,229,531

[Answers](#) | [Edit](#) | [Duplicate](#) | [Used In](#) | [Reorder](#)

[Remove From Test](#)

Question 19

Primary 6 Science » Primary 6 Science (Prelim)

2 pts

Jerome took down notes on the life cycles of a butterfly and mealworm beetle during Science lesson.

L: The young moults.

M: Eggs are laid on land.

N: The young resembles the adult.

O: No feeding takes place at the larva stage.

Which of the statements are true for both life cycles?

- ✓ A. L and M only
- B. M and N only
- C. N and O only
- D. L, M and O only

Question Type: Multiple Choice
Randomize Answers: No
Date Added: Tue 5th Oct 2021
Last Modified: N/A
QID#: 29,229,545

[Answers](#) | [Edit](#) | [Duplicate](#) | [Used In](#) | [Reorder](#)

[Remove From Test](#)

Question 20

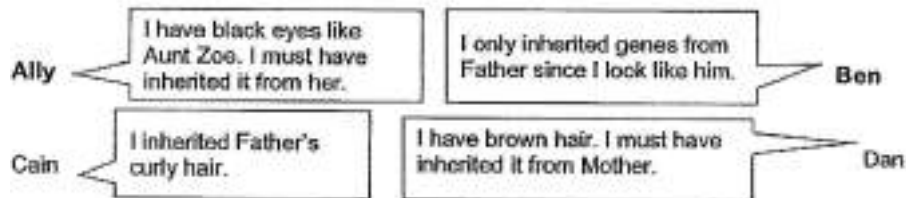
Primary 6 Science » Primary 6 Science (Prelim)

2 pts

The diagram below shows the parents of 4 siblings.



The 4 siblings made the statements below.



Which of the siblings are correct?

- A. Ally and Ben only
- B. Ben and Cain only
- ✓ C. Cain and Dan only
- D. Ally, Cain and Dan only

Question Type: Multiple Choice
Randomize Answers: No
Date Added: Tue 5th Oct 2021
Last Modified: N/A
QID#: 29,229,555

[Answers](#) | [Edit](#) | [Duplicate](#) | [Used In](#) | [Reorder](#)

[Remove From Test](#)

Question 21

Primary 6 Science » Primary 6 Science (Prelim)

2 pts

Which of the following statements is/are true about sexual reproduction in both animals and plants?

P: The female sex cell is the ovule.
 Q: Pollination must take place before fertilisation.
 R: Genetic information is passed down in the sex cells.

- ✓ A. R only
- B. Q only

- C. P and R only
- D. All of the above

Question Type: Multiple Choice
Randomize Answers: No
Date Added: Tue 5th Oct 2021
Last Modified: N/A
QID#: 29,229,561

[Answers](#) | [Edit](#) | [Duplicate](#) | [Used In](#) | [Reorder](#)

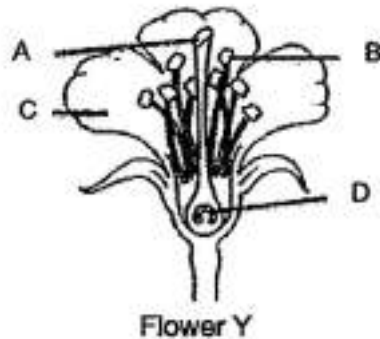
[Remove From Test](#)

Question 22

Primary 6 Science » Primary 6 Science (Prelim)

2 pts

2 parts of the flower below have been removed before pollination took place. After a week, a fruit developed from the flower.



Identify the 2 parts that were most likely removed from Flower Y.

- A. A and B
- B. A and D
- ✓ C. B and C
- D. C and D

Question Type: Multiple Choice
Randomize Answers: No
Date Added: Tue 5th Oct 2021
Last Modified: N/A
QID#: 29,229,565

[Answers](#) | [Edit](#) | [Duplicate](#) | [Used In](#) | [Reorder](#)

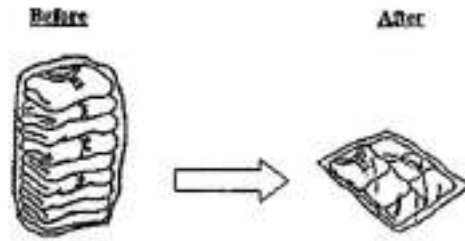
[Remove From Test](#)

Question 23

Primary 6 Science » Primary 6 Science (Prelim)

2 pts

Layla placed all her clothing into a bag then she removed most of the air trapped inside by pushing it out.



Which of the following shows the changes in the mass and volume of the bag after the air was removed?

- A.

Mass of the bag	Volume of the bag
Decrease	Increase
- ✓ B.

Mass of the bag	Volume of the bag
Decrease	Decrease
- C.

Mass of the bag	Volume of the bag
Remains the same	Increase
- D.

Mass of the bag	Volume of the bag
Remains the same	Decrease

Question Type: Multiple Choice
Randomize Answers: No
Date Added: Tue 5th Oct 2021
Last Modified: N/A
QID#: 29,229,573

[Answers](#) | [Edit](#) | [Duplicate](#) | [Used In](#) | [Reorder](#)

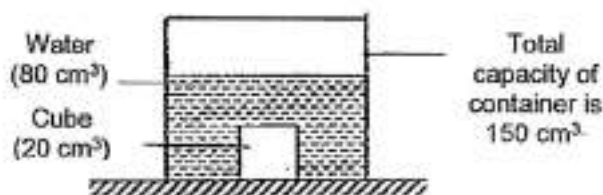
[Remove From Test](#)

Question 24

Primary 6 Science » Primary 6 Science (Prelim)

2 pts

Mei set up the experiment as shown below. There was 80 cm^3 of water, a 20 cm^3 cube and 50 cm^3 of air in the container originally.



What is the volume of the air in the container when she adds another 20 cm^3 cube into the container?

- A. 20 cm^3

- ✓ B. 30 cm³
- C. 40 cm³
- D. 50 cm³

Question Type: Multiple Choice
Randomize Answers: No
Date Added: Tue 5th Oct 2021
Last Modified: N/A
QID#: 29,229,580

[Answers](#) | [Edit](#) | [Duplicate](#) | [Used In](#) | [Reorder](#)

[Remove From Test](#)

Question 25

Primary 6 Science » Primary 6 Science (Prelim)

2 pts

The table below shows the states of 4 substances, A, B, C and D, at different temperatures.

Substance	State at 5°C	State at 50°C	State at 100°C
A	liquid	liquid	gas
B	gas	gas	gas
C	solid	liquid	liquid
D	solid	solid	solid

Based on the information above, which of the substances have the highest melting point?

- A. A
- B. B
- C. C
- ✓ D. D

Question Type: Multiple Choice
Randomize Answers: No
Date Added: Tue 5th Oct 2021
Last Modified: N/A
QID#: 29,229,586

[Answers](#) | [Edit](#) | [Duplicate](#) | [Used In](#) | [Reorder](#)

[Remove From Test](#)

Question 26

Primary 6 Science » Primary 6 Science (Prelim)

2 pts

Sherry poured the same amount of Liquid X but at different temperatures into 2 identical cups. She then placed a metal spoon into each cup and measured the temperature of the spoon after 5 minutes.



	Before the experiment	After the experiment
Spoon A	30°C	+11°C → 41°C
Spoon B	30°C	-10°C → 20°C

Which of the following shows the likely temperatures of liquid X in Cup A and B?

- ✓ A.

Temperature of Liquid X in Cup A (°C)	Temperature of Liquid X in Cup B (°C)
60	11
- B.

Temperature of Liquid X in Cup A (°C)	Temperature of Liquid X in Cup B (°C)
60	40
- C.

Temperature of Liquid X in Cup A (°C)	Temperature of Liquid X in Cup B (°C)
15	15
- D.

Temperature of Liquid X in Cup A (°C)	Temperature of Liquid X in Cup B (° C)
15	40

Question Type: Multiple Choice
 Randomize Answers: No
 Date Added: Tue 5th Oct 2021
 Last Modified: N/A
 QID#: 29,229,662

[Answers](#) | [Edit](#) | [Duplicate](#) | [Used In](#) | [Reorder](#)

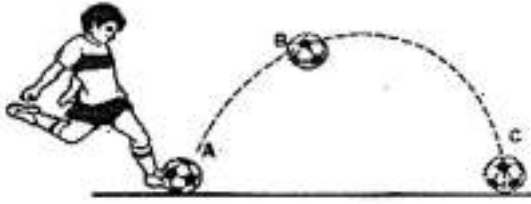
[Remove From Test](#)

Question 27

Primary 6 Science » Primary 6 Science (Prelim)

2 pts

Xavier kicked a ball from point A to point C as shown in the diagram below. The ball continued to roll after reaching point C.



Which one of the following statements is true?

- A. The ball has no more energy at point C.
- ✓ B. The ball has both kinetic and potential energy at point B.
- C. There is no gravitational force acting on the ball at point A.
- D. Gravitational force increases when the ball moves from A to B.

Question Type: Multiple Choice
Randomize Answers: No
Date Added: Tue 5th Oct 2021
Last Modified: N/A
QID#: 29,229,674

[Answers](#) | [Edit](#) | [Duplicate](#) | [Used In](#) | [Reorder](#)

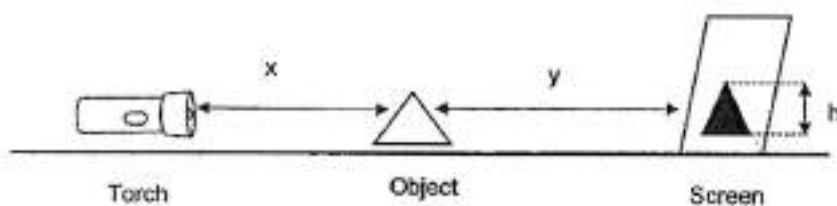
[Remove From Test](#)

Question 28

Primary 6 Science » Primary 6 Science (Prelim)

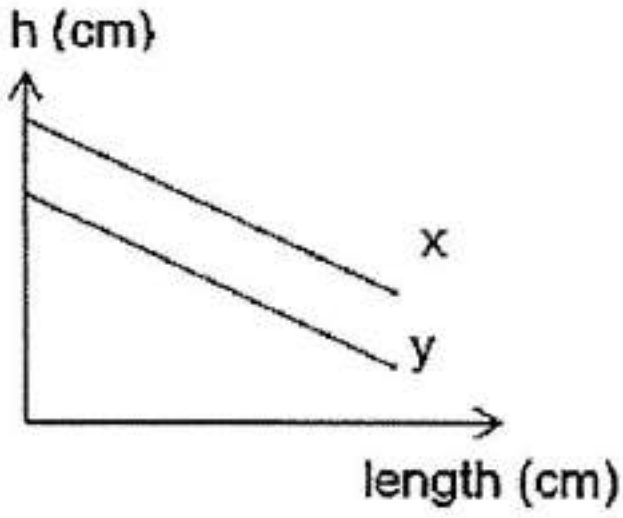
2 pts

An object is placed between a torch and a screen.

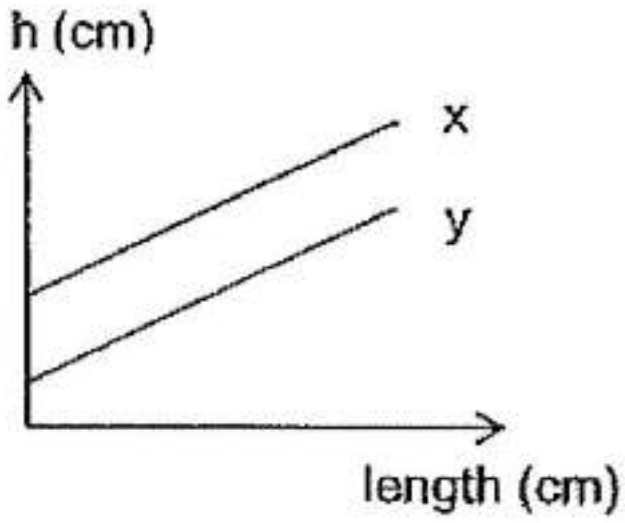


Which of the following graphs shows the correct relationship between x , y and h ?

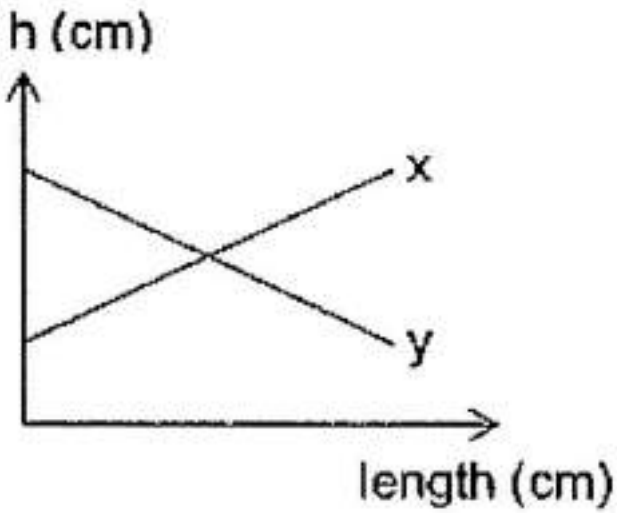
A.



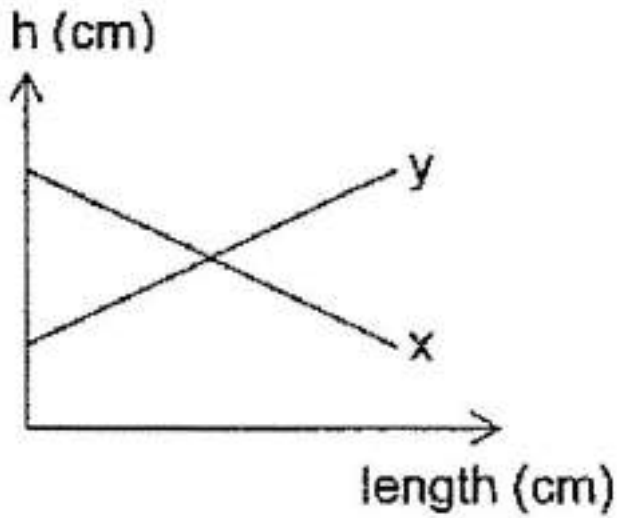
B.



C.



✓ D.



Question Type: Multiple Choice
Randomize Answers: No
Date Added: Tue 5th Oct 2021
Last Modified: N/A
QID#: 29,229,685

[Answers](#) | [Edit](#) | [Duplicate](#) | [Used In](#) | [Reorder](#)

[Remove From Test](#)

Question 29

Primary 6 Science » Primary 6 Science (Prelim)

1 pt

Sally observed 3 different cells, C, D and F, under the microscope and drew how they looked like as shown below.



Cell C



Cell D



Cell F

Which of the cells above is/are animal cells? Explain your answer. (1 mark)

Accepted answers:

✓ Cell F

✓ F

Question Type: Free Text
Date Added: Tue 5th Oct 2021
Last Modified: N/A
QID#: 29,229,690

Correctly answered feedback

Cell F. It does not have a cell wall.

Incorrectly answered feedback

Cell F. It does not have a cell wall.

[Answers](#) |
 [Edit](#) |
 [Duplicate](#) |
 [Used In](#) |
 [Reorder](#)

[Remove From Test](#)

Question 30

Primary 6 Science » Primary 6 Science (Prelim)

0 pts

Sally observed 3 different cells, C, D and F, under the microscope and drew how they looked like as shown below.



Cell C

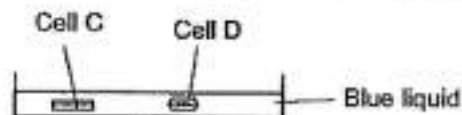


Cell D



Cell F

Sally then placed Cells C and D into a petri dish containing a blue liquid.



After an hour, Cell C increased in size and turned blue but not Cell D. Explain why. (1 mark)

This question is designed for extended answers that parent/ teacher will have to assign and guide child to attempt after the test has been completed.

Grading: This question type is not graded on this system and will not affect the final score as it was designed in such a way that it requires manual assistance.

Question Type: Essay
Date Added: Tue 5th Oct 2021
Last Modified: N/A
QID#: 29,229,699

Correctly answered feedback

The cell membrane of Cell C allowed the blue liquid to enter the cell but the cell membrane of Cell D did not.

Incorrectly answered feedback

The cell membrane of Cell C allowed the blue liquid to enter the cell but the cell membrane of Cell D did not.

[Answers](#) |
 [Edit](#) |
 [Duplicate](#) |
 [Used In](#) |
 [Reorder](#)

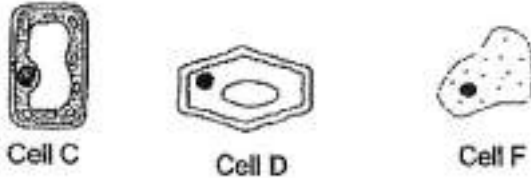
[Remove From Test](#)

Question 31

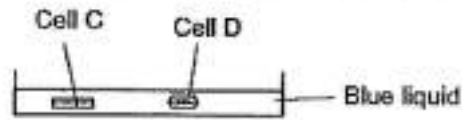
Primary 6 Science » Primary 6 Science (Prelim)

1 pt

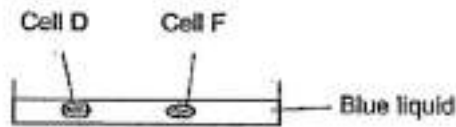
Sally observed 3 different cells, C, D and F, under the microscope and drew how they looked like as shown below.



Sally then placed Cells C and D into a petri dish containing a blue liquid.



Sally then placed Cells D and F into another petri dish containing a blue liquid.



After some time, Cell F burst but Cell D did not. Which cell part prevented Cell D from bursting? (1m)

Accepted answers:

✓ Cell wall

Question Type: Free Text
Date Added: Tue 5th Oct 2021
Last Modified: N/A
QID#: 29,229,705

[Answers](#) | [Edit](#) | [Duplicate](#) | [Used In](#) | [Reorder](#)

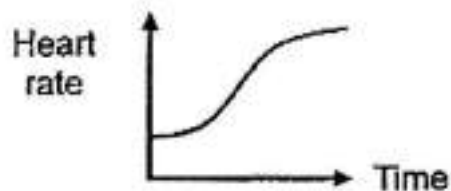
[Remove From Test](#)

Question 32

Primary 6 Science » Primary 6 Science (Prelim)

0 pts

The graph below shows Ken's heart rate during his swim.



Explain why his heart rate increases during his swim. (1 mark)

This question is designed for extended answers that parent/ teacher will have to assign and guide child to attempt after the test has been completed.

Grading: This question type is not graded on this system and will not affect the final score as it was designed in such a way that it requires manual assistance.

Question Type: Essay
Date Added: Tue 5th Oct 2021
Last Modified: N/A
QID#: 29,229,715

Correctly answered feedback

His body needs more oxygen and digested food during exercise so the heart needs to pump oxygen and digested food at a faster rate to all parts of the body.

Incorrectly answered feedback

His body needs more oxygen and digested food during exercise so the heart needs to pump oxygen and digested food at a faster rate to all parts of the body.

[Answers](#) | [Edit](#) | [Duplicate](#) | [Used In](#) | [Reorder](#)

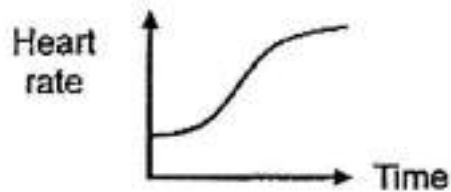
[Remove From Test](#)

Question 33

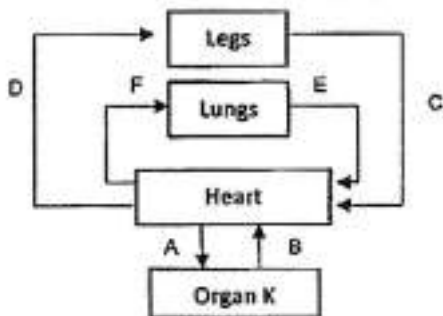
Primary 6 Science » Primary 6 Science (Prelim)

1 pt

The graph below shows Ken's heart rate during his swim.



The diagram below shows the circulatory system. A-F are blood vessels.



Digested food is released into the bloodstream by Organ K.

Identify Organ K.

Accepted answers:

✓ Small intestine

Question Type: Free Text
Date Added: Tue 5th Oct 2021
Last Modified: N/A
QID#: 29,229,730

[Answers](#) | [Edit](#) | [Duplicate](#) | [Used In](#) | [Reorder](#)

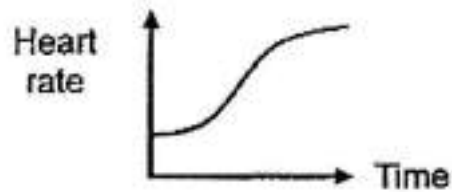
[Remove From Test](#)

Question 34

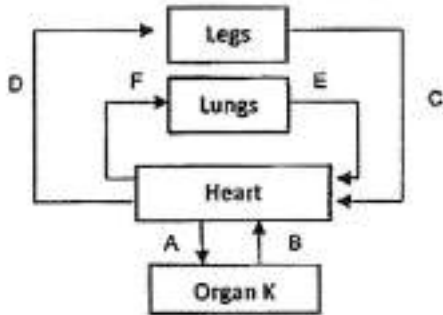
Primary 6 Science » Primary 6 Science (Prelim)

1 pt

The graph below shows Ken's heart rate during his swim.



The diagram below shows the circulatory system. A-F are blood vessels.



Which 2 blood vessels in the diagram above are involved in the transport of digested food to the legs?

Accepted answers:

- ✓ B and D
- ✓ D and B
- ✓ B, D
- ✓ D,B
- ✓ D, B
- ✓ B,D

Question Type: Free Text
Date Added: Tue 5th Oct 2021
Last Modified: N/A
QID#: 29,229,743

[Answers](#) | [Edit](#) | [Duplicate](#) | [Used In](#) | [Reorder](#)

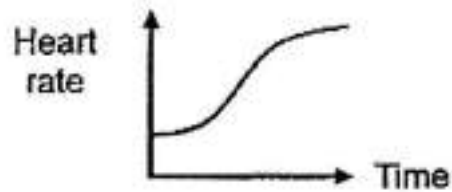
[Remove From Test](#)

Question 35

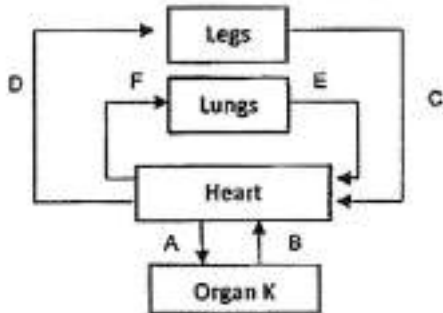
Primary 6 Science » Primary 6 Science (Prelim)

0 pts

The graph below shows Ken's heart rate during his swim.



The diagram below shows the circulatory system. A-F are blood vessels.



The diagram below shows a whale.



Unlike sharks, a whale needs to come up for air from time to time even when they live underwater. Why? (1m)

This question is designed for extended answers that parent/ teacher will have to assign and guide child to attempt after the test has been completed.

Grading: This question type is not graded on this system and will not affect the final score as it was designed in such a way that it requires manual assistance.

Question Type: Essay
 Date Added: Tue 5th Oct 2021
 Last Modified: N/A
 QID#: 29,229,768

Correctly answered feedback

A whale breathes through lungs, not gills.

Incorrectly answered feedback

A whale breathes through lungs, not gills.

[Answers](#) | [Edit](#) | [Duplicate](#) | [Used In](#) | [Reorder](#)

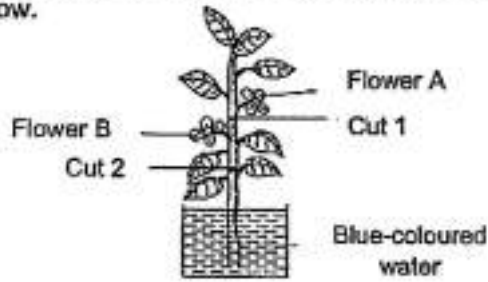
[Remove From Test](#)

Question 36

Primary 6 Science » Primary 6 Science (Prelim)

0 pts

Mrs Gomaz placed a plant with 2 white flowers into a beaker containing blue-coloured water. She made 2 cuts on the stem as shown in the diagram below.



A few days later, Mrs Gomaz observed that Flower A had withered while Flower B turned blue. Explain Mrs Gomaz's observations. (2 marks)

This question is designed for extended answers that parent/ teacher will have to assign and guide child to attempt after the test has been completed.

Grading: This question type is not graded on this system and will not affect the final score as it was designed in such a way that it requires manual assistance.

Question Type: Essay
Date Added: Tue 5th Oct 2021
Last Modified: N/A
QID#: 29,229,794

Correctly answered feedback

Flower A withered because the water-carrying tubes were cut at Cut 1 so the blue water cannot be transported to Flower A. Flower B turned blue as the water-carrying tubes were not cut so the blue water can still be transported to Flower B.

Incorrectly answered feedback

Flower A withered because the water-carrying tubes were cut at Cut 1 so the blue water cannot be transported to Flower A. Flower B turned blue as the water-carrying tubes were not cut so the blue water can still be transported to Flower B.

[Answers](#) | [Edit](#) | [Duplicate](#) | [Used In](#) | [Reorder](#)

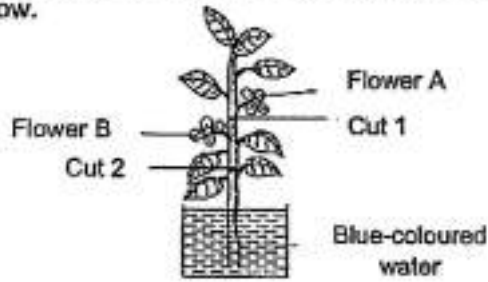
[Remove From Test](#)

Question 37

Primary 6 Science » Primary 6 Science (Prelim)

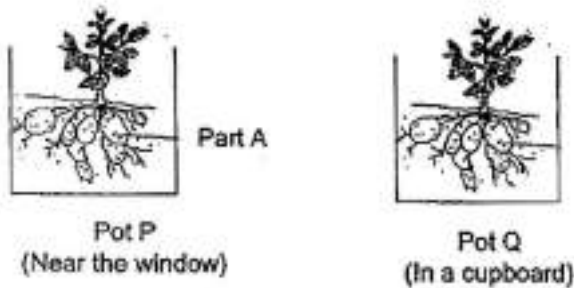
0 pts

Mrs Gomaz placed a plant with 2 white flowers into a beaker containing blue-coloured water. She made 2 cuts on the stem as shown in the diagram below.



The diagram below shows 2 pots of plants which store food in Part A.

Pot P was placed near the window while Pot Q was placed in a cupboard.



Which pot, P or Q, will have a bigger Part A after some time? Explain your answer. (2m)

This question is designed for extended answers that parent/ teacher will have to assign and guide child to attempt after the test has been completed.

Grading: This question type is not graded on this system and will not affect the final score as it was designed in such a way that it requires manual assistance.

Question Type: Essay
 Date Added: Tue 5th Oct 2021
 Last Modified: N/A
 QID#: 29,229,818

Correctly answered feedback

Pot P. The plant in Pot P was exposed to light but the plant in Pot Q was not. The plant in Pot P can make food but the Plant in Pot Q cannot. Food made by the plant in Pot P can be transported to Part A and be stored there but the plant in Pot Q used the stored food in Part A.

Incorrectly answered feedback

Pot P. The plant in Pot P was exposed to light but the plant in Pot Q was not. The plant in Pot P can make food but the Plant in Pot Q cannot. Food made by the plant in Pot P can be transported to Part A and be stored there but the plant in Pot Q used the stored food in Part A.

[Answers](#) | [Edit](#) | [Duplicate](#) | [Used In](#) | [Reorder](#)

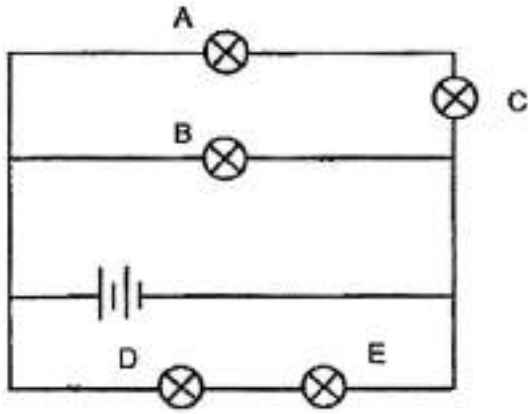
[Remove From Test](#)

Question 38

Primary 6 Science » Primary 6 Science (Prelim)

0 pts

The diagram below shows how 5 identical bulbs are arranged in a room.



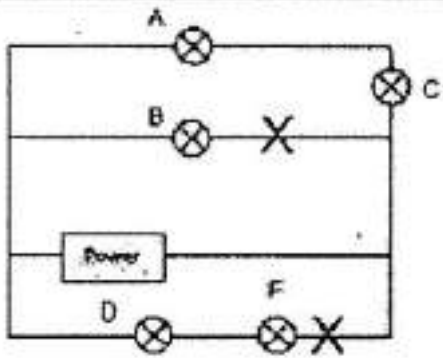
Draw 2 switches (Using 'X') on the diagram above such that when the switches are open, only Bulbs A and C remain lit up. (1 mark)

This question is designed for extended answers that parent/ teacher will have to assign and guide child to attempt after the test has been completed.

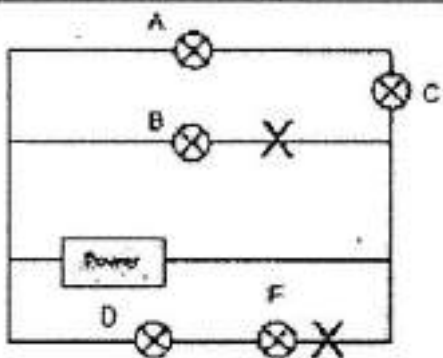
Grading: This question type is not graded on this system and will not affect the final score as it was designed in such a way that it requires manual assistance.

Question Type: Essay
 Date Added: Tue 5th Oct 2021
 Last Modified: N/A
 QID#: 29,229,827

Correctly answered feedback



Incorrectly answered feedback

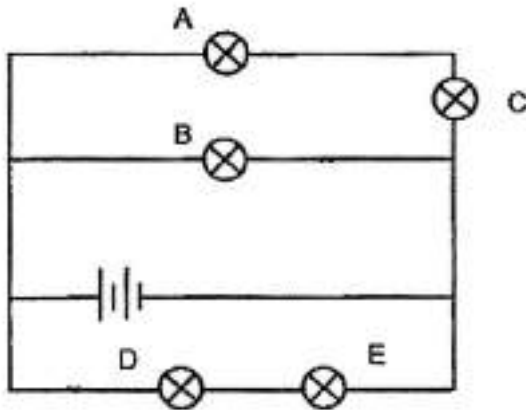


Question 39

Primary 6 Science » Primary 6 Science (Prelim)

1 pt

The diagram below shows how 5 identical bulbs are arranged in a room.



State the bulbs that have the same brightness as Bulb D. (1 mark)

Accepted answers:

- ✓ A, C and E
- ✓ C, a, and E
- ✓ C, E and A
- ✓ A, C, E
- ✓ A, E, C
- ✓ C, E, A
- ✓ C, A, E
- ✓ E, A, C
- ✓ E, C, A
- ✓ E, C and A
- ✓ E, A and C

Question Type: Free Text
 Date Added: Tue 5th Oct 2021
 Last Modified: N/A
 QID#: 29,229,840

[Answers](#) | [Edit](#) | [Duplicate](#) | [Used In](#) | [Reorder](#)

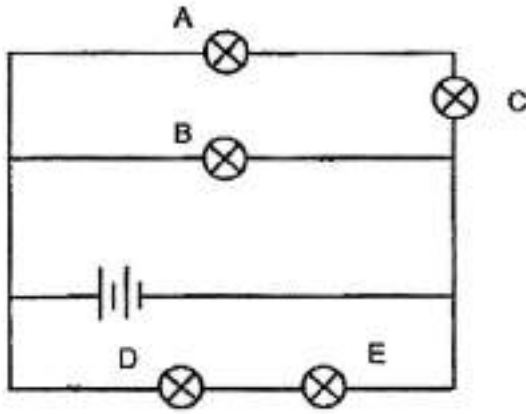
[Remove From Test](#)

Question 40

Primary 6 Science » Primary 6 Science (Prelim)

1 pt

The diagram below shows how 5 identical bulbs are arranged in a room.



Which of the bulbs will continue to light up if Bulb C is fused. (1 mark)

Accepted answers:

- ✓ B, D and E
- ✓ B, E, and D
- ✓ B, D, E
- ✓ B, E, D
- ✓ b, e and d
- ✓ D, B and E
- ✓ D, E and B
- ✓ D, E, B
- ✓ D, B, E
- ✓ E, D, B
- ✓ E, B, D
- ✓ E, B and D
- ✓ E, D and B

Question Type: Free Text
Date Added: Tue 5th Oct 2021
Last Modified: N/A
QID#: 29,229,871

[Answers](#) | [Edit](#) | [Duplicate](#) | [Used In](#) | [Reorder](#)

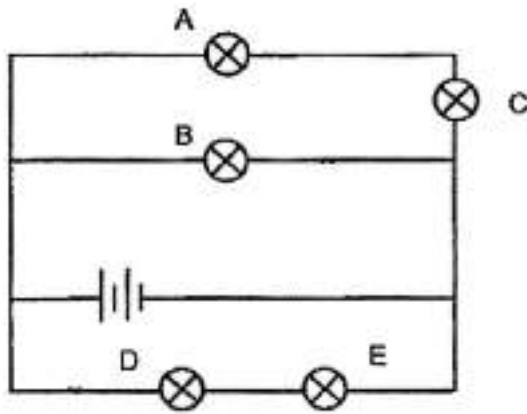
[Remove From Test](#)

Question 41

Primary 6 Science » Primary 6 Science (Prelim)

0 pts

The diagram below shows how 5 identical bulbs are arranged in a room.



Will Bulb D light up if Bulb E is fused? Explain your answer. (1 mark)

This question is designed for extended answers that parent/ teacher will have to assign and guide child to attempt after the test has been completed.

Grading: This question type is not graded on this system and will not affect the final score as it was designed in such a way that it requires manual assistance.

Question Type: Essay
Date Added: Tue 5th Oct 2021
Last Modified: N/A
QID#: 29,229,878

Correctly answered feedback

No. D and E are arranged in series so when E is fused, there will be an open circuit and D will not light up.

Incorrectly answered feedback

No. D and E are arranged in series so when E is fused, there will be an open circuit and D will not light up.

[Answers](#) | [Edit](#) | [Duplicate](#) | [Used In](#) | [Reorder](#)

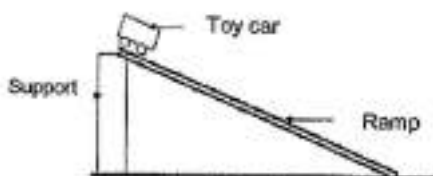
[Remove From Test](#)

Question 42

Primary 6 Science » Primary 6 Science (Prelim)

0 pts

Leon set up the experiment below. He recorded the time taken for the toy car to travel down the ramp on 3 different surfaces P, Q and R.



Surfaces	Average time for toy car to reach the bottom of ramp (sec)
P	10.6
Q	4.5
R	8.7

Besides using the same toy car, state another 2 variables that Leon should keep the same to ensure a fair test? (1 mark)

This question is designed for extended answers that parent/ teacher will have to assign and guide child to attempt after the test has been completed.

Grading: This question type is not graded on this system and will not affect the final score as it was designed in such a way that it requires manual assistance.

Question Type: Essay
Date Added: Tue 5th Oct 2021
Last Modified: N/A
QID#: 29,229,930

Correctly answered feedback

Height of support / Length of ramp / Position of release of the toy car / Steepness of the ramp

Incorrectly answered feedback

Height of support / Length of ramp / Position of release of the toy car / Steepness of the ramp

[Answers](#) | [Edit](#) | [Duplicate](#) | [Used In](#) | [Reorder](#)

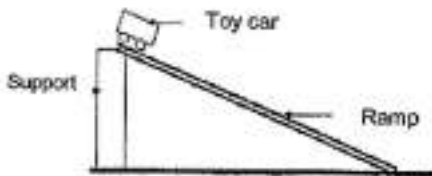
[Remove From Test](#)

Question 43

Primary 6 Science » Primary 6 Science (Prelim)

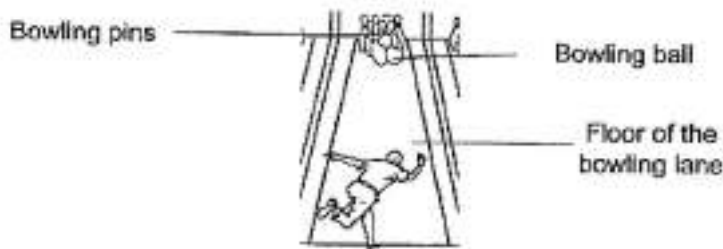
0 pts

Leon set up the experiment below. He recorded the time taken for the toy car to travel down the ramp on 3 different surfaces P, Q and R.



Surfaces	Average time for toy car to reach the bottom of ramp (sec)
P	10.6
Q	4.5
R	8.7

The picture below shows a bowling game. The bowling ball is released before hitting the pins at the end of the lane.



Leon found that Surface Q allows him to hit the most number of pins. Explain why, based on the results in the table. (2 marks)

This question is designed for extended answers that parent/ teacher will have to assign and guide child to attempt after the test has been completed.

Grading: This question type is not graded on this system and will not affect the final score as it was designed in such a way that it requires manual assistance.

Question Type: Essay
Date Added: Tue 5th Oct 2021
Last Modified: N/A
QID#: 29,229,940

Correctly answered feedback

There is the least friction between the ball and floor as the toy car / ball as it moved fastest on surface Q (as shown by the results).

Incorrectly answered feedback

There is the least friction between the ball and floor as the toy car / ball as it moved fastest on surface Q (as shown by the results).

[Answers](#) |
 [Edit](#) |
 [Duplicate](#) |
 [Used In](#) |
 [Reorder](#)

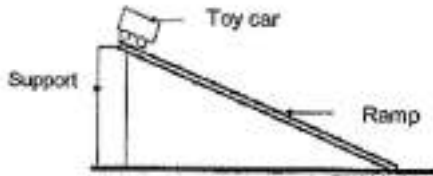
[Remove From Test](#)

Question 44

Primary 6 Science » Primary 6 Science (Prelim)

0 pts

Leon set up the experiment below. He recorded the time taken for the toy car to travel down the ramp on 3 different surfaces P, Q and R.



Surfaces	Average time for toy car to reach the bottom of ramp (sec)
P	10.6
Q	4.5
R	8.7

Which pair of shoes, X or Y, should Leon wear on the surface that he has chosen in (b) so that he will not slip? Explain your answer. (1m)



This question is designed for extended answers that parent/ teacher will have to assign and guide child to attempt after the test has been completed.

Grading: This question type is not graded on this system and will not affect the final score as it was designed in such a way that it requires manual assistance.

Question Type: Essay

Date Added: Tue 5th Oct 2021

Last Modified: N/A

QID#: 29,229,945

Correctly answered feedback

Shoe Y. The soles of Shoe Y is rougher than the soles of Shoe X so there is more friction between the soles of Shoe Y and the surface.

Incorrectly answered feedback

Shoe Y. The soles of Shoe Y is rougher than the soles of Shoe X so there is more friction between the soles of Shoe Y and the surface.

[Answers](#) |
 [Edit](#) |
 [Duplicate](#) |
 [Used In](#) |
 [Reorder](#)

[Remove From Test](#)

Question 45

Primary 6 Science » Primary 6 Science (Prelim)

0 pts

Why do seeds have to be dispersed? (1 mark)

This question is designed for extended answers that parent/ teacher will have to assign and guide child to attempt after the test has been completed.

Grading: This question type is not graded on this system and will not affect the final score as it was designed in such a way that it requires manual assistance.

Question Type: Essay

Date Added: Tue 5th Oct 2021

Last Modified: N/A

QID#: 29,230,833

Correctly answered feedback

To travel further away from parent plant to avoid overcrowding.

Incorrectly answered feedback

To travel further away from parent plant to avoid overcrowding.

[Answers](#) | [Edit](#) | [Duplicate](#) | [Used In](#) | [Reorder](#)

[Remove From Test](#)

Question 46

Primary 6 Science » Primary 6 Science (Prelim)

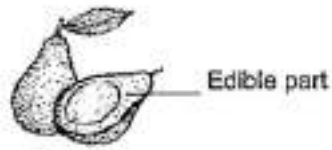
0 pts

The diagram below shows 2 different types of fruits, P and Q.

The whole of Fruit P is eaten by birds and it contains many indigestible seeds. Fruit Q, also eaten by birds, has a big indigestible seed in the middle.



Fruit P



Fruit Q

State the advantage of the method of seed dispersal of Fruit P over Fruit Q. (2 marks)

This question is designed for extended answers that parent/ teacher will have to assign and guide child to attempt after the test has been completed.

Grading: This question type is not graded on this system and will not affect the final score as it was designed in such a way that it requires manual assistance.

Question Type: Essay
Date Added: Tue 5th Oct 2021
Last Modified: N/A
QID#: 29,230,841

Correctly answered feedback

Seeds of Fruit P get mineral salts from the bird droppings to grow better.

Incorrectly answered feedback

Seeds of Fruit P get mineral salts from the bird droppings to grow better.

[Answers](#) | [Edit](#) | [Duplicate](#) | [Used In](#) | [Reorder](#)

[Remove From Test](#)

Question 47

Primary 6 Science » Primary 6 Science (Prelim)

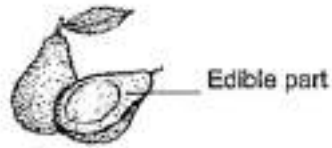
0 pts

The diagram below shows 2 different types of fruits, P and Q.

The whole of Fruit P is eaten by birds and it contains many indigestible seeds. Fruit Q, also eaten by birds, has a big indigestible seed in the middle.

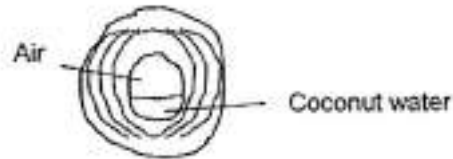


Fruit P



Fruit Q

The diagram below shows the cross-section of a coconut fruit.



State 2 characteristics of the coconut fruit that allow it to be dispersed by water. (1m)

This question is designed for extended answers that parent/ teacher will have to assign and guide child to attempt after the test has been completed.

Grading: This question type is not graded on this system and will not affect the final score as it was designed in such a way that it requires manual assistance.

Question Type: Essay
 Date Added: Tue 5th Oct 2021
 Last Modified: N/A
 QID#: 29,230,847

Correctly answered feedback

Fibrous husk, waterproof surface, air spaces inside.

Incorrectly answered feedback

Fibrous husk, waterproof surface, air spaces inside.

[Answers](#) | [Edit](#) | [Duplicate](#) | [Used In](#) | [Reorder](#)

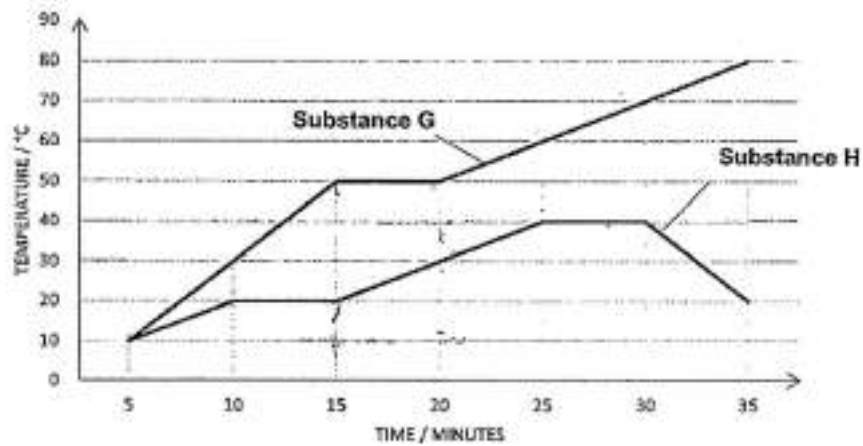
[Remove From Test](#)

Question 48

Primary 6 Science » Primary 6 Science (Prelim)

0.5 pts

Mrs Henderson heated 2 substances, G and H, and their temperature changes were plotted on the graph below.



Based on the graph above, answer the following question.

Substance G is in the solid state at the 5th min.
What is the state of Substance G at the 28th min?

Substance G: _____

Accepted answers:

✓ Liquid

Question Type: Free Text
Date Added: Tue 5th Oct 2021
Last Modified: N/A
QID#: 29,230,861

[Answers](#) | [Edit](#) | [Duplicate](#) | [Used In](#) | [Reorder](#)

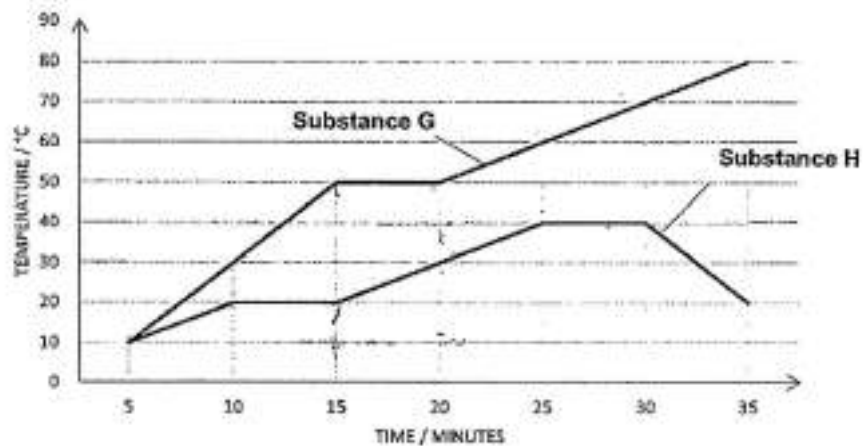
[Remove From Test](#)

Question 49

Primary 6 Science » Primary 6 Science (Prelim)

0.5 pts

Mrs Henderson heated 2 substances, G and H, and their temperature changes were plotted on the graph below.



Substance H is in the solid state at the 5th min.

What is the state of Substance H at the 28th min?

Substance H: _____ and _____

Accepted answers:

- ✓ Liquid and Gas
- ✓ Gas and liquid

Question Type: Free Text
Date Added: Tue 5th Oct 2021
Last Modified: N/A
QID#: 29,230,924

[Answers](#) | [Edit](#) | [Duplicate](#) | [Used In](#) | [Reorder](#)

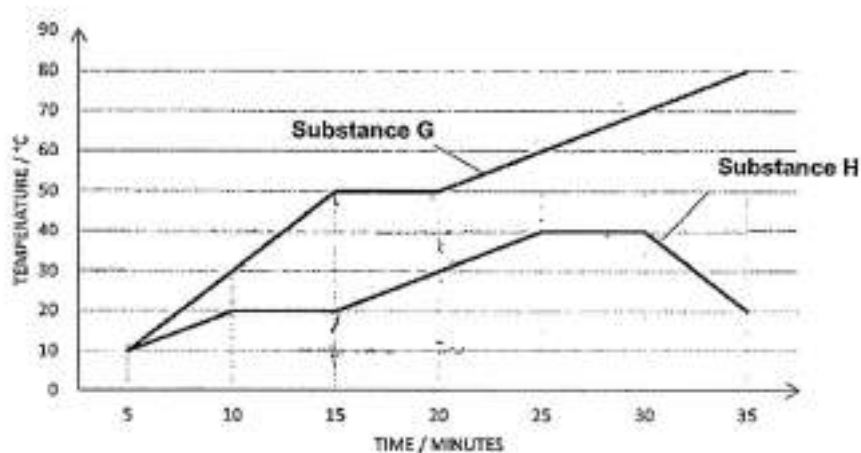
[Remove From Test](#)

Question 50

Primary 6 Science » Primary 6 Science (Prelim)

0 pts

Mrs Henderson heated 2 substances, G and H, and their temperature changes were plotted on the graph below.



Describe what is happening to Substance G between the 15th and 20th min. (1 mark)

This question is designed for extended answers that parent/ teacher will have to assign and guide child to attempt after the test has been completed.

Grading: This question type is not graded on this system and will not affect the final score as it was designed in such a way that it requires manual assistance.

Question Type: Essay
Date Added: Tue 5th Oct 2021
Last Modified: N/A
QID#: 29,230,974

Correctly answered feedback

Substance G is gaining heat and melting.

Incorrectly answered feedback

Substance G is gaining heat and melting.

[Answers](#) | [Edit](#) | [Duplicate](#) | [Used In](#) | [Reorder](#)

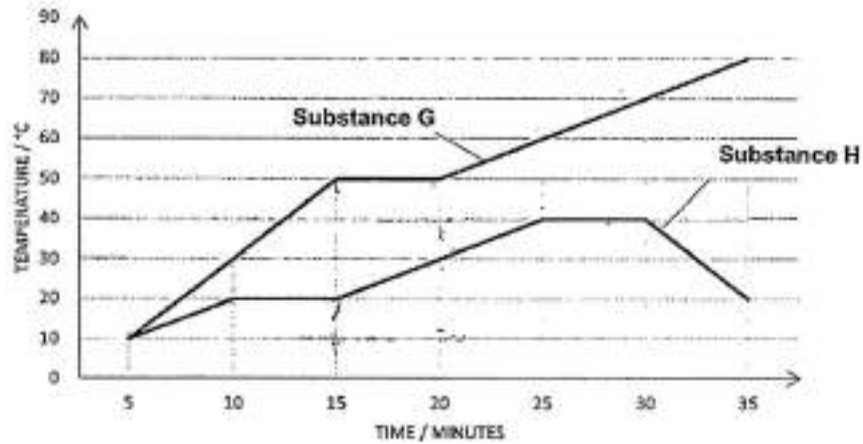
[Remove From Test](#)

Question 51

Primary 6 Science » Primary 6 Science (Prelim)

1 pt

Mrs Henderson heated 2 substances, G and H, and their temperature changes were plotted on the graph below.



State the freezing point of substance H. (1 mark)

Accepted answers:

- ✓ 20 degree celcius
- ✓ 20 degrees
- ✓ 20

Question Type: Free Text
 Date Added: Tue 5th Oct 2021
 Last Modified: N/A
 QID#: 29,230,983

Correctly answered feedback

20°C

Incorrectly answered feedback

20°C

[Answers](#) | [Edit](#) | [Duplicate](#) | [Used In](#) | [Reorder](#)

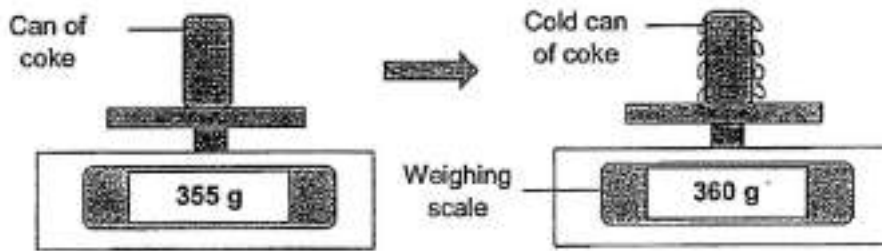
[Remove From Test](#)

Question 52

Primary 6 Science » Primary 6 Science (Prelim)

0 pts

Diana took a cold can of coke (355g) from the refrigerator and placed it on the weighing scale. After 10 minutes, she observed that the can of coke became heavier as shown below.



Explain why the cold can of coke became heavier. (2 marks)

This question is designed for extended answers that parent/ teacher will have to assign and guide child to attempt after the test has been completed.

Grading: This question type is not graded on this system and will not affect the final score as it was designed in such a way that it requires manual assistance.

Question Type: Essay
Date Added: Tue 5th Oct 2021
Last Modified: N/A
QID#: 29,230,996

Correctly answered feedback

Warmer water vapour in the surrounding lost heat to the cooler outer surface of the can and condensed into water droplets (which stayed on the can), increasing the mass of the can.

Incorrectly answered feedback

Warmer water vapour in the surrounding lost heat to the cooler outer surface of the can and condensed into water droplets (which stayed on the can), increasing the mass of the can.

[Answers](#) | [Edit](#) | [Duplicate](#) | [Used In](#) | [Reorder](#)

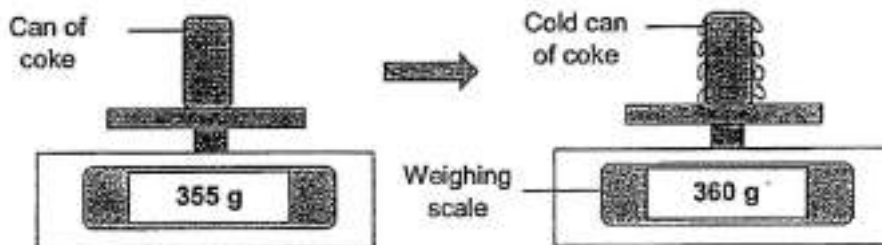
[Remove From Test](#)

Question 53

Primary 6 Science » Primary 6 Science (Prelim)

1 pt

Diana took a cold can of coke (355g) from the refrigerator and placed it on the weighing scale. After 10 minutes, she observed that the can of coke became heavier as shown below.



Choose the most likely mass of the can of coke 10 minutes after it was taken out of the freezer. (1 mark)

- A. 350g
- B. 360g
- ✓ C. 366g

Question Type: Multiple Choice
Randomize Answers: No
Date Added: Tue 5th Oct 2021
Last Modified: N/A
QID#: 29,231,015

[Answers](#) | [Edit](#) | [Duplicate](#) | [Used In](#) | [Reorder](#)

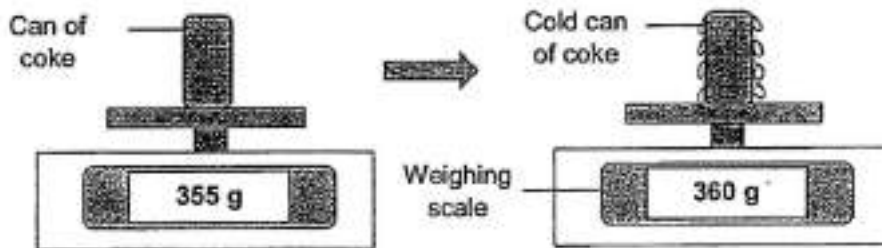
[Remove From Test](#)

Question 54

Primary 6 Science » Primary 6 Science (Prelim)

0 pts

Diana took a cold can of coke (355g) from the refrigerator and placed it on the weighing scale. After 10 minutes, she observed that the can of coke became heavier as shown below.



Explain your answer in the previous question. (1 mark)

This question is designed for extended answers that parent/ teacher will have to assign and guide child to attempt after the test has been completed.

Grading: This question type is not graded on this system and will not affect the final score as it was designed in such a way that it requires manual assistance.

Question Type: Essay
Date Added: Tue 5th Oct 2021
Last Modified: N/A
QID#: 29,231,055

Correctly answered feedback

The can became much colder which increased the temperature difference between the can and the warmer water vapour from the surroundings, allowing the rate of condensation to increase.

Incorrectly answered feedback

The can became much colder which increased the temperature difference between the can and the warmer water vapour from the surroundings, allowing the rate of condensation to increase.

[Answers](#) | [Edit](#) | [Duplicate](#) | [Used In](#) | [Reorder](#)

[Remove From Test](#)

Question 55

Primary 6 Science » Primary 6 Science (Prelim)

0 pts

Xavier was drenched in the rain as he did not have an umbrella.



He managed to find a shelter after a while but he was soaking wet.
Explain why he felt colder even when he was no longer in the rain. (1 mark)

This question is designed for extended answers that parent/ teacher will have to assign and guide child to attempt after the test has been completed.

Grading: This question type is not graded on this system and will not affect the final score as it was designed in such a way that it requires manual assistance.

Question Type: Essay
Date Added: Tue 5th Oct 2021
Last Modified: N/A
QID#: 29,231,065

Correctly answered feedback

Water on his skin gained heat from his body in order to evaporate.

Incorrectly answered feedback

Water on his skin gained heat from his body in order to evaporate.

[Answers](#) | [Edit](#) | [Duplicate](#) | [Used In](#) | [Reorder](#)

[Remove From Test](#)

Question 56

Primary 6 Science » Primary 6 Science (Prelim)

0 pts

Xavier was drenched in the rain as he did not have an umbrella.



When the wind blew, Xavier felt even colder. Explain why he felt colder. (2 marks)

This question is designed for extended answers that parent/ teacher will have to assign and guide child to attempt after the test has been completed.

Grading: This question type is not graded on this system and will not affect the final score as it was designed in such a way that it requires manual assistance.

Question Type: Essay
Date Added: Tue 5th Oct 2021
Last Modified: N/A
QID#: 29,231,074

Correctly answered feedback

The presence of wind increased the rate of evaporation and the water gained more heat from his body.

Incorrectly answered feedback

The presence of wind increased the rate of evaporation and the water gained more heat from his body.

[Answers](#) | [Edit](#) | [Duplicate](#) | [Used In](#) | [Reorder](#)

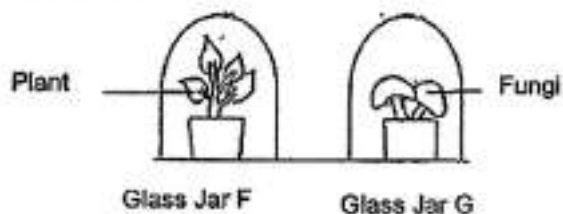
[Remove From Test](#)

Question 57

Primary 6 Science » Primary 6 Science (Prelim)

0 pts

A plant and fungi are placed in 2 separate clear glass jars, F and G, and given the same amount of water at the start of the experiment. They are placed near the window.



Will Glass Jar F have more, less or an equal amount of oxygen, as compared to Glass Jar G after some time? Explain your answer. (2 marks)

This question is designed for extended answers that parent/ teacher will have to assign and guide child to attempt after the test has been completed.

Grading: This question type is not graded on this system and will not affect the final score as it was designed in such a way that it requires manual assistance.

Question Type: Essay
Date Added: Tue 5th Oct 2021
Last Modified: N/A
QID#: 29,231,092

Correctly answered feedback

More amount of oxygen. Glass Jar F has a plant which will photosynthesize and produce oxygen but the fungi in Glass Jar G cannot photosynthesize and cannot give out oxygen.

Incorrectly answered feedback

More amount of oxygen. Glass Jar F has a plant which will photosynthesize and produce oxygen but the fungi in Glass Jar G cannot photosynthesize and cannot give out oxygen.

[Answers](#) | [Edit](#) | [Duplicate](#) | [Used In](#) | [Reorder](#)

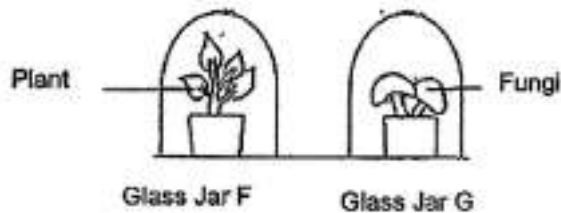
[Remove From Test](#)

Question 58

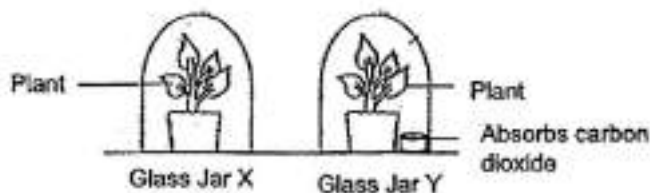
Primary 6 Science » Primary 6 Science (Prelim)

0 pts

A plant and fungi are placed in 2 separate clear glass jars, F and G, and given the same amount of water at the start of the experiment. They are placed near the window.



Another experiment was carried out at the same place. 2 similar plants are placed in separate glass jars, X and Y, and given the same amount of water at the start of the experiment. A solution that absorbs carbon dioxide is placed in Glass Jar Y. The amount of oxygen in each jar was measured at the end of the experiment,



What is the aim of the experiment? (1 mark)

This question is designed for extended answers that parent/ teacher will have to assign and guide child to attempt after the test has been completed.

Grading: This question type is not graded on this system and will not affect the final score as it was designed in such a way that it requires manual assistance.

Question Type: Essay
Date Added: Tue 5th Oct 2021
Last Modified: N/A
QID#: 29,231,101

Correctly answered feedback

To find out if carbon dioxide is needed for photosynthesis.

Incorrectly answered feedback

To find out if carbon dioxide is needed for photosynthesis.

[Answers](#) | [Edit](#) | [Duplicate](#) | [Used In](#) | [Reorder](#)

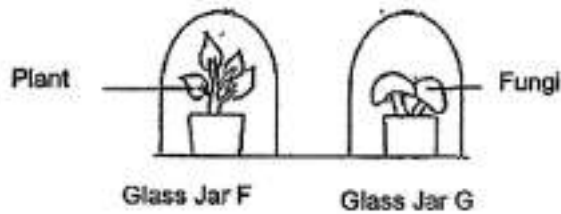
[Remove From Test](#)

Question 59

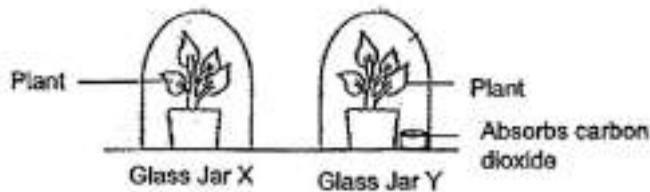
Primary 6 Science » Primary 6 Science (Prelim)

2 pts

A plant and fungi are placed in 2 separate clear glass jars, F and G, and given the same amount of water at the start of the experiment. They are placed near the window.



Another experiment was carried out at the same place. 2 similar plants are placed in separate glass jars, X and Y, and given the same amount of water at the start of the experiment. A solution that absorbs carbon dioxide is placed in Glass Jar Y. The amount of oxygen in each jar was measured at the end of the experiment.



Which glass Jar, X or Y, will have more oxygen after some time? Explain your answer. (2 marks)

Accepted answers:

- ✓ Glass Jar X
- ✓ X

Question Type: Free Text
Date Added: Tue 5th Oct 2021
Last Modified: N/A
QID#: 29,231,115

Correctly answered feedback

Glass Jar X. There is carbon dioxide in Jar X but not in Jar Y. Carbon dioxide is needed for photosynthesis, thus the plant in Glass Jar X can photosynthesise and give out oxygen but the plant in Glass Jar Y cannot.

Incorrectly answered feedback

Glass Jar X. There is carbon dioxide in Jar X but not in Jar Y. Carbon dioxide is needed for photosynthesis, thus the plant in Glass Jar X can photosynthesise and give out oxygen but the plant in Glass Jar Y cannot.

[Answers](#) | [Edit](#) | [Duplicate](#) | [Used In](#) | [Reorder](#)[Remove From Test](#)

Question 60

Primary 6 Science » Primary 6 Science (Prelim)

0 pts

Magdalene has 2 containers, J and K, as shown below. They are of similar size but are made of different materials. She poured the same volume of hot soup (80°C) into both containers.



Container J



Container K

After a few hours, the soup in Container J is still warm but that in container K is cold.

Explain Magdalene's observations. (2 marks)

This question is designed for extended answers that parent/ teacher will have to assign and guide child to attempt after the test has been completed.

Grading: This question type is not graded on this system and will not affect the final score as it was designed in such a way that it requires manual assistance.

Question Type: Essay
Date Added: Tue 5th Oct 2021
Last Modified: Tue 5th Oct 2021
QID#: 29,231,125

Correctly answered feedback

Container J is a poorer conductor of heat than Container K so the soup in Container J lost heat to the surrounding air more slowly.

Incorrectly answered feedback

Container J is a poorer conductor of heat than Container K so the soup in Container J lost heat to the surrounding air more slowly.

[Answers](#) | [Edit](#) | [Duplicate](#) | [Used In](#) | [Reorder](#)[Remove From Test](#)

Question 61

Primary 6 Science » Primary 6 Science (Prelim)

1 pt

Magdalene has 2 containers, J and K, as shown below. They are of similar size but are made of different materials. She poured the same volume of hot soup (80°C) into both containers.



Container J



Container K

After a few hours, the soup in Container J is still warm but that in container K is cold.

Which container, J or K, is more suitable for keeping cold desserts cold for a longer period of time?

Accepted answers:

- ✓ Container J
- ✓ J

Question Type: Free Text
 Date Added: Tue 5th Oct 2021
 Last Modified: N/A
 QID#: 29,231,138

[Answers](#) | [Edit](#) | [Duplicate](#) | [Used In](#) | [Reorder](#)

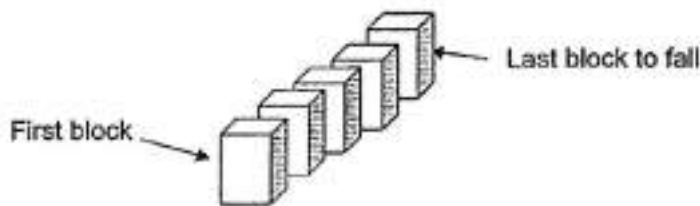
[Remove From Test](#)

Question 62

Primary 6 Science » Primary 6 Science (Prelim)

0 pts

Dave arranged some similar blocks as shown below. He then pushed only the first block and the rest of the blocks fell as well.



Explain, in terms of energy, how the last block fell. (1 mark)

This question is designed for extended answers that parent/ teacher will have to assign and guide child to attempt after the test has been completed.

Grading: This question type is not graded on this system and will not affect the final score as it was designed in such a way that it requires manual assistance.

Question Type: Essay
 Date Added: Tue 5th Oct 2021
 Last Modified: N/A
 QID#: 29,231,166

Correctly answered feedback

Kinetic energy from the first block is transferred to the next block and eventually to the last block to make the last block fall.

Incorrectly answered feedback

Kinetic energy from the first block is transferred to the next block and eventually to the last block to make the last block fall.

[Answers](#) | [Edit](#) | [Duplicate](#) | [Used In](#) | [Reorder](#)

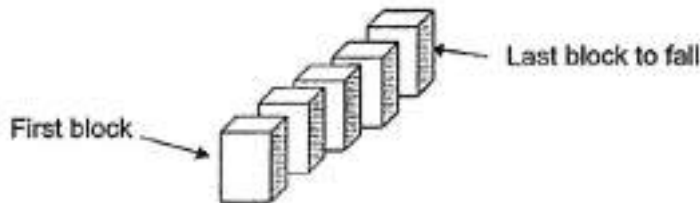
[Remove From Test](#)

Question 63

Primary 6 Science » Primary 6 Science (Prelim)

0 pts

Dave arranged some similar blocks as shown below. He then pushed only the first block and the rest of the blocks fell as well.



Dave then replaced the last block with a block that was 3 times heavier than the original block as shown in the diagram below.



When the first block was pushed, the rest of the blocks fell but not the last block. Explain why. (1 mark)

This question is designed for extended answers that parent/ teacher will have to assign and guide child to attempt after the test has been completed.

Grading: This question type is not graded on this system and will not affect the final score as it was designed in such a way that it requires manual assistance.

Question Type: Essay
Date Added: Tue 5th Oct 2021
Last Modified: N/A
QID#: 29,231,206

Correctly answered feedback

There is not enough kinetic energy to push the last block.

Incorrectly answered feedback

There is not enough kinetic energy to push the last block.

[Answers](#) | [Edit](#) | [Duplicate](#) | [Used In](#) | [Reorder](#)

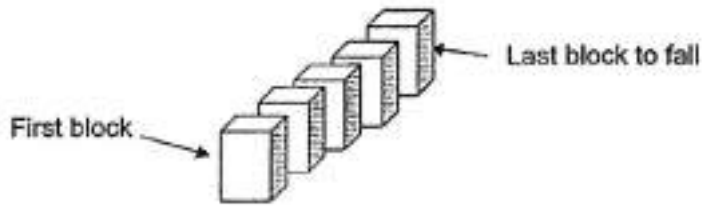
[Remove From Test](#)

Question 64

Primary 6 Science » Primary 6 Science (Prelim)

0 pts

Dave arranged some similar blocks as shown below. He then pushed only the first block and the rest of the blocks fell as well.



Dave then replaced the last block with a block that was 3 times heavier than the original block as shown in the diagram below.



What can Dave do to ensure that the last block falls when the first block is pushed? (1 mark)

This question is designed for extended answers that parent/ teacher will have to assign and guide child to attempt after the test has been completed.

Grading: This question type is not graded on this system and will not affect the final score as it was designed in such a way that it requires manual assistance.

Question Type: Essay
Date Added: Tue 5th Oct 2021
Last Modified: N/A
QID#: 29,231,231

Correctly answered feedback

Replace the first block with a block that is heavier than the last block. / Push the first block with more force.

Incorrectly answered feedback

Replace the first block with a block that is heavier than the last block. / Push the first block with more force.

[Answers](#) | [Edit](#) | [Duplicate](#) | [Used In](#) | [Reorder](#)

[Remove From Test](#)